



# SAINT LUCIA COVID-19 ENTRY PROTOCOLS FOR CRUISE LINE PASSENGERS



# SCOPE OF REVIEW

- 1** Mandatory Entry Requirements
- 2** Fully Vaccinated Passenger
- 3** Non-Fully Vaccinated Passengers
- 4** Passenger Pre-Arrival Procedures
- 5** Passenger Arrival
- 6** Embarkation
- 7** Disembarkation



# MANDATORY ENTRY REQUIREMENTS

1

- ALL passengers **MUST** present a negative result from a PCR test taken no more than 5 days before boarding the vessel.
- ALL passengers (2 years and over) and crew **MUST** present proof of COVID-19 vaccination (both doses in the case of a two-dose vaccine) to facilitate entry into the country.
- ALL passengers and crew should have received the complete vaccination at least two weeks prior to boarding the vessel.
- Vaccinated cruise passengers will be issued colored bands to differentiate them from non-vaccinated cruise passengers.



# FULLY VACCINATED PASSENGERS

# 2

Fully vaccinated passengers **MUST** travel with a valid negative COVID-19 PCR test

## Passengers are considered fully vaccinated if:

- They have completed the full regimen of COVID-19 vaccines approved by the Ministry of Health and Wellness, more than two weeks prior to travel to Saint Lucia.

## Fully vaccinated passengers can:

- Free to roam the island and engage in local activities
- Access the various sites and attractions, restaurant, beaches, shopping centres, etc. on-island for recreational purposes.



## NON-FULLY VACCINATED PASSENGERS

3

Passengers who are NOT fully-vaccinated must travel with a valid negative COVID-19 PCR test

### **Passenger are considered non-fully vaccinated if:**

- A person has never received a vaccination and there is no proof of such
- A person claims to be vaccinated but the evidence produced is inadequate
- A person has only received one dose of the two-dose regimen
- A person has completed the full regimen of approved vaccines less than 14 days prior to travel

### **Non-Fully Vaccinated Passengers can only:**

- Participate in pre-booked tours and excursions via the cruise desk on board the vessel and must remain as part of the “Green Corridor” or “Bubble” for adherence to health and safety guidelines.
- Access only assigned beaches for recreation, once the relevant security measures are in place

The **Green Corridor** or **Bubble** is defined as the direct route between the seaport and the approved sites, attractions and services using designated transportation, following strict COVID-19 protocols, with no unauthorized persons entering or exiting the designated transportation. No interaction with any individual outside of the transportation along the route is permitted.

**All ships calling Saint Lucia are required to submit to the Port Health Office the following documents must be submitted 48 hours prior to arrival at port:**

- Maritime Declaration of Health (MDH)
- Travel history of crew and passengers for the last 30 days
- Ship's travel log
- Ship Sanitation Certificate
- Vaccination list for all passengers and crew
- An updated Health Declaration must be presented if there is a change in illness within four (4) hours before arrival and the final MDH submitted after the vessel has berthed and request made for pratique.

The Ministry of Health will review the MDH in a timely fashion to assess action to be taken.

## **Passenger Arrival**

- All disembarking passengers will be subjected to public health assessment and to temperature screening of passengers upon entry to ports in Saint Lucia.
- In an emergency, direct telephone contact with the Authorities and other entities involved will be privileged.

# EMBARKATION

# 5

On arrival, of a cruise ship to Saint Lucia, passengers will follow the national protocols for entry into the island.

Saint Lucia Air and Sea Ports through their ground handling agents, and will coordinate staggered arrival of passengers to ensure physical distancing.

The Cruise Line shall conduct health assessments of passengers prior to embarkation as it relates to wellness screening and temperature checks aligned with the Saint Lucia Ministry of Health and Wellness protocols.



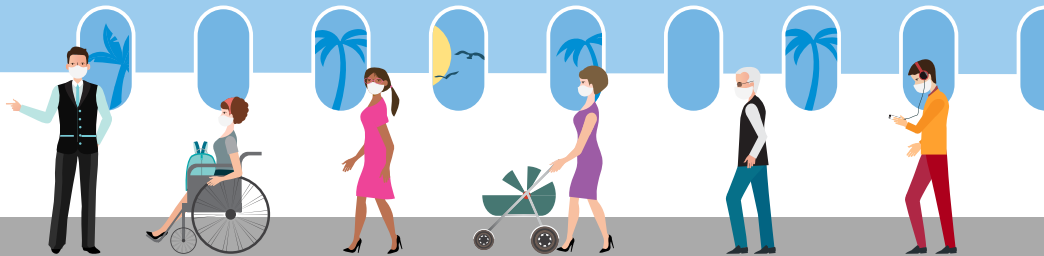
# DISEMBARKATION

## 6

Passengers may disembark to participate in certified activities, within the **Green Corridor**, under the following conditions:

- A negative PCR test for any passenger or crew member displaying signs and symptoms of COVID-19 after boarding.
- Completion of 14 days of quarantine if the individual is a close contact of a confirmed, probable or suspected case.
- Proof of complete vaccination against SARS CoV-2.
- Has been registered with a local authorized tour agency prior to arrival.
- Must adhere to all safety protocols in place throughout Saint Lucia, including wearing a mask in public and physical distancing. The violation of these protocols is an offence and punishable by fines or prison.

On arrival of a Cruise Line to Saint Lucia, all passengers will enter a queue that will ensure a safe and orderly disembarkation from the ship. All passengers will be asked to wait for notification that it is time for their group to disembark and will then proceed to leave the ship.





## IF AN OUTBREAK IS DECLARED

7

- The Chief Medical Officer (CMO), Medical Officer of Health, and National Epidemiologist (or designate) and Chief Environmental Health Officer form an Outbreak Assessment Team to determine if an outbreak investigation is required.

### **On Board Isolation:**

- Passengers or crew testing positive for SARS-CoV-2 will be placed in isolation.
- No passenger or crew will be allowed in an isolation stateroom, with the exception of medical staff providing treatment.



# SAINT LUCIA COVID-19 ENTRY PROTOCOLS FOR CRUISE LINE PASSENGERS 2021

Last Updated 26/08/2021



## SAINT LUCIA

LET HER INSPIRE YOU